

**86**  
*Top deals*



**NEW**

**LOCKING TOOL SET**  
VW-Audi (1.0-1.5 TSI)

**3/2025**  
**SOLUTIONS**

**NEWS + PROMOTION 01.09. - 31.12.2025**

**MISSION: KLANNPOSSIBLE**

*Time saving, safe, well thought out tools.*

## OPERATION BOARD

Made in Germany



### TIME SAVING

These tools especially save time and thus real money.



### SAFE WORK

With these tools, the focus is particularly on safety during use



### ONLY FROM GEDORE

These tools are protected by us by patent, utility model, or design patent



### MATERIAL-PROTECTING

These tools protect vehicle or spare parts from damage during removal and installation



### COMMERCIAL VEHICLES

These tools are especially developed and suited for the use on commercial vehicles



### VANS

These tools are especially developed and suited for the use on vans



### PASSENGER CARS

These tools are especially designed and suitable for use on passenger cars

KL-4999-320

## WORKSHOP TROLLEY

"Springs and shock absorbers"

**NEW**

Trolley now also available in anthracite!



### Scope of delivery:

- Robust workshop/assembly trolley with four full-extension drawers with ball-bearings
- Stationary spring compressor for safe tensioning of chassis springs on McPherson spring struts
- Internal-type spring compressor with hold-down device for safe tensioning of chassis springs on wishbones and multi-link axles
- Removal and installation aid for pre-tensioning McPherson spring struts with spring strut clamping hole, for a faster removal and installation
- Special sockets for unscrewing and tightening of shock absorber piston rod screw connections on McPherson spring struts
- Special socket spanner for counter-holding defective strut bearing nuts on VAG vehicles
- Spreading tool for damage-free spreading of spring strut clamping holes as well as support joint mounting devices
- Support device for safely supporting wheel suspensions during maintenance work on the chassis
- Including many other accessory parts and supplements



Universally suitable on chassis systems of passenger cars and vans. Mobile workstation with extensive special tool assortment for fast, efficient maintenance work, especially in the area of spring and shock absorber replacement.



| Code    | Part No.       | Width    | Depth  | Height | Load capacity (static / dynamic) | Drawer type    | Number of drawers | Colour     | Contents | Weight |
|---------|----------------|----------|--------|--------|----------------------------------|----------------|-------------------|------------|----------|--------|
| 3514021 | KL-4999-320    | 1.200 mm | 635 mm | 985 mm | 1000 / 750 kg                    | Full extension | 4                 | blue       | 72       | 220 kg |
| 3532631 | KL-4999-320/AT | 1.200 mm | 635 mm | 985 mm | 1000 / 750 kg                    | Full extension | 4                 | anthracite | 72       | 220 kg |



KL-5501 B

**STATIONARY SPRING COMPRESSOR**

Made in Germany



Universal fit for nearly all McPherson spring struts on the market.

Fits particularly for right or left rising springs, conical springs, eccentric springs, springs with a low number of coils, springs with a high or varying spring pitch, spring struts with pulling shocks as well as for spring struts with electronic control and sensors.

- UNIQUE, QUICK and SAFE, simply BETTER!
- Tensions even the strongest springs - EV vehicles
- Damage-free holding above the damper tube
- Safe tensioning directly via the shock top bearing
- Spring form and pitch completely irrelevant
- No intervention in the spring necessary
- Maximum user safety
- Simplest handling
- One-man operation
- High load capacity
- 4-fold safety



Application video

| Code    | Part No.  | Spring plat Ø (min.) | Spring plat Ø (max.) | Working Travel | Load (max.) | Drive (waf) | Weight |
|---------|-----------|----------------------|----------------------|----------------|-------------|-------------|--------|
| 3230503 | KL-5501 B | 125 mm               | 220 mm               | 570 mm         | 15.000 N    | 24 mm       | 46 kg  |

**Accessories:**

| Code    | Part No.    | Description  |
|---------|-------------|--|
| 3469344 | KL-5501 B Z | Spring Compressor with Mobile Work Stand           |
| 3462242 | KL-5501-500 | Mobile Work Stand for Stationary Spring Compressor |
| 3406059 | KL-5501-31  | Spring Collar Adaptor Ring, Ø 60 / 90mm            |
| 3461068 | KL-5501-210 | Assembly Set, KL-5501 B, Modulo / adjustable       |
| 3479595 | KL-5501-41  | Protective Cover for Stationary Spring Compressor  |
| 3402444 | KL-5501-40  | Hand Crank for KL-5501 / KL-5501 B                 |

KL-0056-11 EB

**SHOCK ABSORBER PISTON ROD TOOL KIT**

Fits universally for McPherson struts on passenger cars and vans.

- For quick loosening and tightening of the piston rod nut on McPherson struts
- Extensive range of special sockets and screwdriver bits

**Advantages:**

- Holder for 5/16" bits
- Holder for 1/4" sockets
- Open bi-hex socket

Suitability: universal



Application video

| Code    | Part No.      | Storage          | Width  | Depth  | Height | Contents | Weight |
|---------|---------------|------------------|--------|--------|--------|----------|--------|
| 3462307 | KL-0056-11 EB | in a foam insert | 370 mm | 231 mm | 56 mm  | 23       | 1.7 kg |

KL-0029-20 K

**REMOVAL AND MOUNTING AID****for McPherson suspension struts (VW-Audi)**

Made in Germany



Suitable for McPherson suspension struts especially for VW, Audi, Seat and Škoda vehicles on the MQB, NSF, PQ25 or PQ35 platform.

- Quick removal and installation of the strut by pre-tensioning or reducing the overall length
- Can be used regardless of spring shape or pitch
- No direct intervention into the spring
- No need to loosen axle parts
- No wheel alignment required
- Very high time and cost savings, with maximum user safety
- Also suitable for many other vehicles thanks to additional supplementary kits

**Note:** The removal and mounting aid must not be used for the disassembling of suspension struts.



Application video

Suitability: **VW** **AUDI** **SEAT** **ŠKODA**

| Code    | Part No.     | Operating stroke | Clamping width (min. - max.) | Load (max.) | Drive (hex) | Storage   | Width  | Depth  | Height | Weight |
|---------|--------------|------------------|------------------------------|-------------|-------------|-----------|--------|--------|--------|--------|
| 3477843 | KL-0029-20 K | 160 mm           | 250 - 410 mm                 | 17.500 N    | 27 mm       | in a case | 500 mm | 420 mm | 175 mm | 13 kg  |

**Additional accessories:**

| Code    | Part No.      | Description  |
|---------|---------------|--|
| 3434419 | KL-0029-200 K | Removal and mounting aid for McPh. suspension struts (base tool) |
| 3127850 | KL-0029-110 A | Upgrade Kit, VW  |
| 3275221 | KL-0029-160 A | Upgrade Kit Gr.6, (BMW)  |
| 3477851 | KL-0029-150 A | Upgrade Kit, Ford  |

KL-0104-21 KB

**SPREADER TOOL, ADJUSTABLE, with wedges 1 + 2 + 4 + 5**

Made in Germany

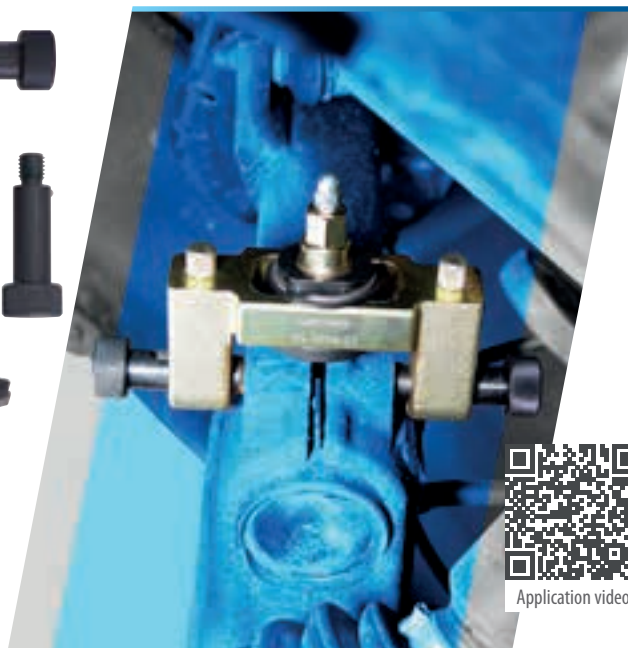


Suitable for suspension strut clamping bores and suspension joint mounts.

- Enables the professional expansion of the suspension strut clamping bore or the lower support joint receiver
- In order to be able to pull out stuck shock absorber units or support joints without damage

**Advantages:**

- For clamping bore gap of 2 - 16 mm!
- No jamming of the expanding tool!
- No excessive widening of the clamping bore thanks to expansion wedges with stop!
- No damage to the cast or aluminium steering knuckle housing!
- Off-centre clamping slots are no problem!



Application video

Suitability: universal, especially for:

**VW** **AUDI** **SEAT** **ŠKODA** **BMW** **MERCEDES** **FIAT** **FORD** **KIA** **RENAULT** **PEUGEOT** **NISSAN** **VOLVO**

| Code    | Part No.      | Expanding dimension  | Storage   | Weight  |
|---------|---------------|--|-----------|---------|
| 3269396 | KL-0104-21 KB | a=5.5 mm; b=12.0 mm (wedge 1) / a=2.0 mm; b=8.0 mm (wedge 2) / a=5.5 mm; b=9.5 mm (wedge 4) / a=12.5 mm; b=17.0 mm (wedge 5) | in a case | 1.75 kg |



KL-0101-60

## SPREADING SOCKET SET 1/2"

Suitable for clamping bores on spring struts or wheel bearing housings as well as support joints holders.

- 3-piece kit with special 2-flat profiles
- For a quick and safe spreading of clamping bores
- Spreading by inserting and twisting the socket spanner
- Facilitates the disassembly and assembly of spring struts and support joints

**NEW**

### Content:

1x Spreading insert 5x7mm, 1/2"  
1x Spreading insert 5.5x8.2 mm, 1/2"  
1x Spreading insert 5.5x11 mm, 1/2"



Suitability: universal

| Code    | Part No.   | Profile | Drive (square) | Contents | Weight |
|---------|------------|---------|----------------|----------|--------|
| 3518558 | KL-0101-60 | oval    | 1/2"           | 3        | 250 g  |

Made in Germany



KL-0050-6...

## SPECIAL SOCKET STRUT MOUNT, VW

Fits universally for VW-Audi, Seat, and Škoda, with 13 mm (hexagonal or 8-edge) or with 14 mm (hexagon) retaining nuts on the shock top bearing.

- For a professional counter-holding of the retaining nuts on the shock top bearing
- No tearing off of the pressed in retaining nut
- No extensive boring out of the shock top bearing screws
- Also for hard-to-reach parts



Suitability: universal, especially for:

**VW AUDI SEAT ŠKODA CUPRA**

| Code    | Part No.   | Size (waf) | Profile           | Drive (square) | Length |
|---------|------------|------------|-------------------|----------------|--------|
| 3051412 | KL-0050-60 | 13 mm      | hexagon / octagon | 3/8"           | 89 mm  |
| 3124479 | KL-0050-61 | 14 mm      | 12-kant           | 3/8"           | 92 mm  |

KL-8041-400 E

## PREMIUM WHEEL BEARING TOOL SET

with foam insert



Suitable for the removal and installation of wheel hub bearing units with Ø 72 / 78 / 82 / 85 / 92 mm, e.g. for VW, Audi, Seat, Skoda, Ford, Mazda, Volvo, etc.

- For the professional removal and installation of wheel hub bearing units
- Especially powerful due to the 17 t hydraulic cylinder

Suitability: universal, especially for:

**VW AUDI SKODA SEAT MAZDA VOLVO FORD**



Application video

| Code    | Part No.      | Drive type | Load (max.) | Storage          | Weight |
|---------|---------------|------------|-------------|------------------|--------|
| 3449831 | KL-8041-400 E | hydraulic  | 12 t        | in a foam insert | 30 kg  |

KL-0041-384

## BEAD BREAKER KIT

Universally suitable for 3rd generation screwed wheel bearing units on cars and vans.

- For professional extraction of tight-fitting wheel bearing units directly on the vehicle
- Only in combination with wheel hub extractor KL-0041-3800 A (KL-0041-380 EA)



Made in Germany



Application video



Suitability: universal

| Code    | Part No.    | Drive type             | Load (max.) | Weight |
|---------|-------------|------------------------|-------------|--------|
| 3446840 | KL-0041-384 | hydraulic / mechanical | 12 t        | 4.5 kg |



KL-0040-860

## WHEEL BEARING TOOL SET, Ford Transit

Made in Germany

Suitability: **FORD**

Suitable for the front axle of Ford Transit/Tourneo (My. 2000-2006 / 2006-2014 / from 2014-...) with front as well as all-wheel drive (bolt circle-Ø at brake disc bolts 97.5 and 111 mm).

- For removing the bolted wheel bearing unit with wheel hub and brake disc
- For removing and pressing in the wheel hub on the wheel bearing unit

### Advantages:

- No removal and installation of the wheel bearing housing
- No wheel alignment necessary



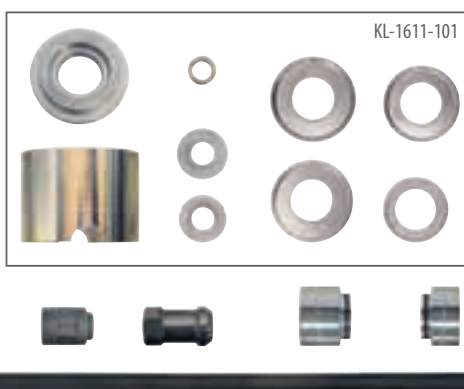
Application video

| Code    | Part No.    | Wheel stud circle | Wheel stud circle (2) | Load (max.) | Drive type | Weight |
|---------|-------------|-------------------|-----------------------|-------------|------------|--------|
| 2372290 | KL-0040-860 | 97.5 mm           | 111 mm                | 28 t        | hydraulic  | 4.6 kg |

KL-1611-100

## WHEEL BEARING TOOL SET, FIAT DUCATO

Made in Germany



Suitable for Fiat, Peugeot, Citroën and Opel with wheel bearing Ø 90 mm on the front axle.

Fitted, for example, on Fiat Ducato III (250 \_), Peugeot Boxer II, Citroën Jumper II, Opel Movano C (U9).

- For professional removal and installation of the wheel bearing and retraction of the wheel hub
- No disassembly of the steering knuckle
- No wheel alignment
- Easy removal even if the wheel bearings are very stuck
- Wheel hub must be removed in advance!



### Suitability:

**CITROEN** **FIAT** **OPEL** **PEUGEOT**

| Code    | Part No.    | for outer-Ø (bearing) | Load (max.) | Drive type | Weight |
|---------|-------------|-----------------------|-------------|------------|--------|
| 3479463 | KL-1611-100 | 90 mm                 | 28 t        | hydraulic  | 7.8 kg |
| 3479455 | KL-1611-101 | 90 mm                 | 28 t        | hydraulic  | 4.3 kg |

Made in Germany



KL-0177-3

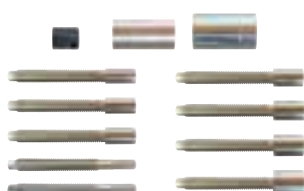
## DRIVE SHAFT RETRACTION TOOL

Universally suitable for drive shafts, for example in VW, Audi, Seat, Skoda, Porsche, BMW, Mercedes, Opel, Renault, Peugeot, Hyundai, Subaru and many more.

- For drawing drive shafts into the wheel hub
- For compressed drive shafts or drive shafts that are difficult to draw in
- 9x different draw spindles for internal and external threads



Suitability: universal, especially for:

**VW** **AUDI** **BMW** **MERCEDES**
**RENAULT** **OPEL** **PEUGEOT**
**PORSCHE** **SEAT** **ŠKODA**


| Code    | Part No.  | for external thread   | for internal thread | Drive type |
|---------|-----------|---|---------------------|------------|
| 2406403 | KL-0177-3 | M16x1,5   M18x1,5   M20x1,5   M22x1,5   M24x1,5   M27x1,5   M30x1,5 | M14x1,5   M16x1,5   | mechanical |

Made in Germany

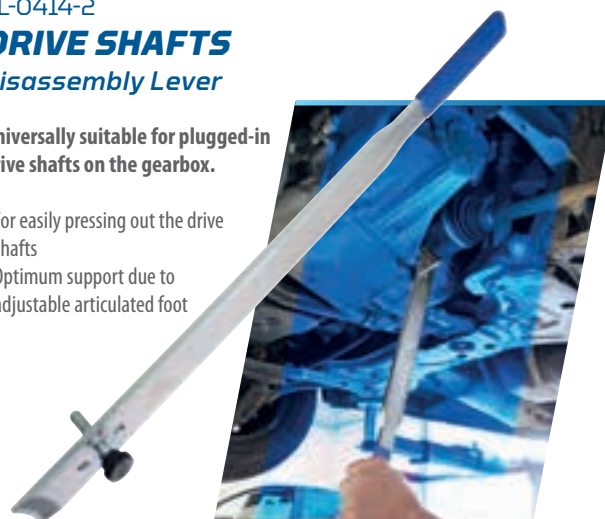


KL-0414-2

## DRIVE SHAFTS disassembly Lever

Universally suitable for plugged-in drive shafts on the gearbox.

- For easily pressing out the drive shafts
- Optimum support due to adjustable articulated foot



| Code    | Part No.  | Length | Blade width | Version    | Handle material |
|---------|-----------|--------|-------------|------------|-----------------|
| 3421171 | KL-0414-2 | 610 mm | 40.0 mm     | adjustable | Plastic         |

KL-0121-880

**HOSE CLAMP PLIERS***for steering boots, long version*

Made in Germany



Fits universally for ear hose clamps on steering boots of cars and vans.  
For a max. ear width of 19.5 mm and max. closing force of 2,400 N.

- For professional tensioning (compressing)
- Exact clamping according to torque specification
- Unique design for particularly hard to reach places



Suitability: universal

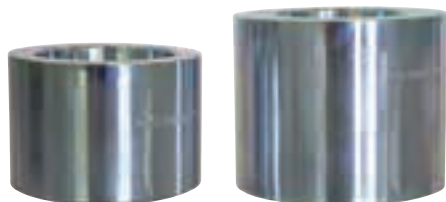


| Code    | Part No.    | Clamping width (max.) | Drive (max.) | Clamping force (max.) | hexagon (counterholding) | Drive (square) | Head width | Length | Weight |
|---------|-------------|-----------------------|--------------|-----------------------|--------------------------|----------------|------------|--------|--------|
| 3476626 | KL-0121-880 | 20 mm                 | 15 Nm        | 2,4 kN                | 24 mm                    | 1/4"           | 64 mm      | 595 mm | 1 kg   |

KL-0214-261

**SILENT BLOC TOOL, VW-AUDI**

Made in Germany

**NEW**

Suitable for the rear Silent blocs (rubber-metal bearings) on the front axle control arm on VW, Audi, Seat, Škoda and Cupra.

- For professional press-in and press-out directly on the vehicle
- Especially for Silent blocs with outer Ø: 65 mm / inner Ø: 13 mm / height: 50 mm
- No need to replace the complete control arm
- Additional drive parts required (mechanical or hydraulic)!

Suitability:

**VW** **AUDI** **SEAT** **ŠKODA** **CUPRA**

| Code    | Part No.    | for outer-Ø (removed) | Drive type             | Load (max.) | Weight |
|---------|-------------|-----------------------|------------------------|-------------|--------|
| 3532887 | KL-0214-261 | 65 mm                 | hydraulic / mechanical | 7 t         | 1 kg   |

KL-0214-181

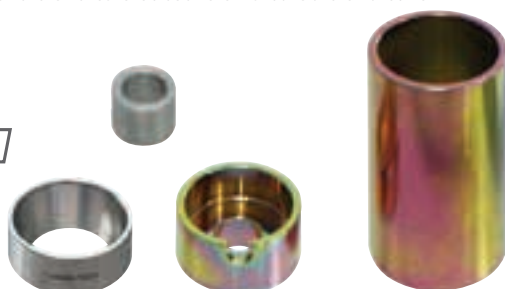
**SLEEVE SET, VW-AUDI**

Made in Germany



Suitable for VW Golf, Passat, Scirocco, Tiguan, Touran, T-Roc; Audi A3; Seat Leon; Skoda Octavia; etc.

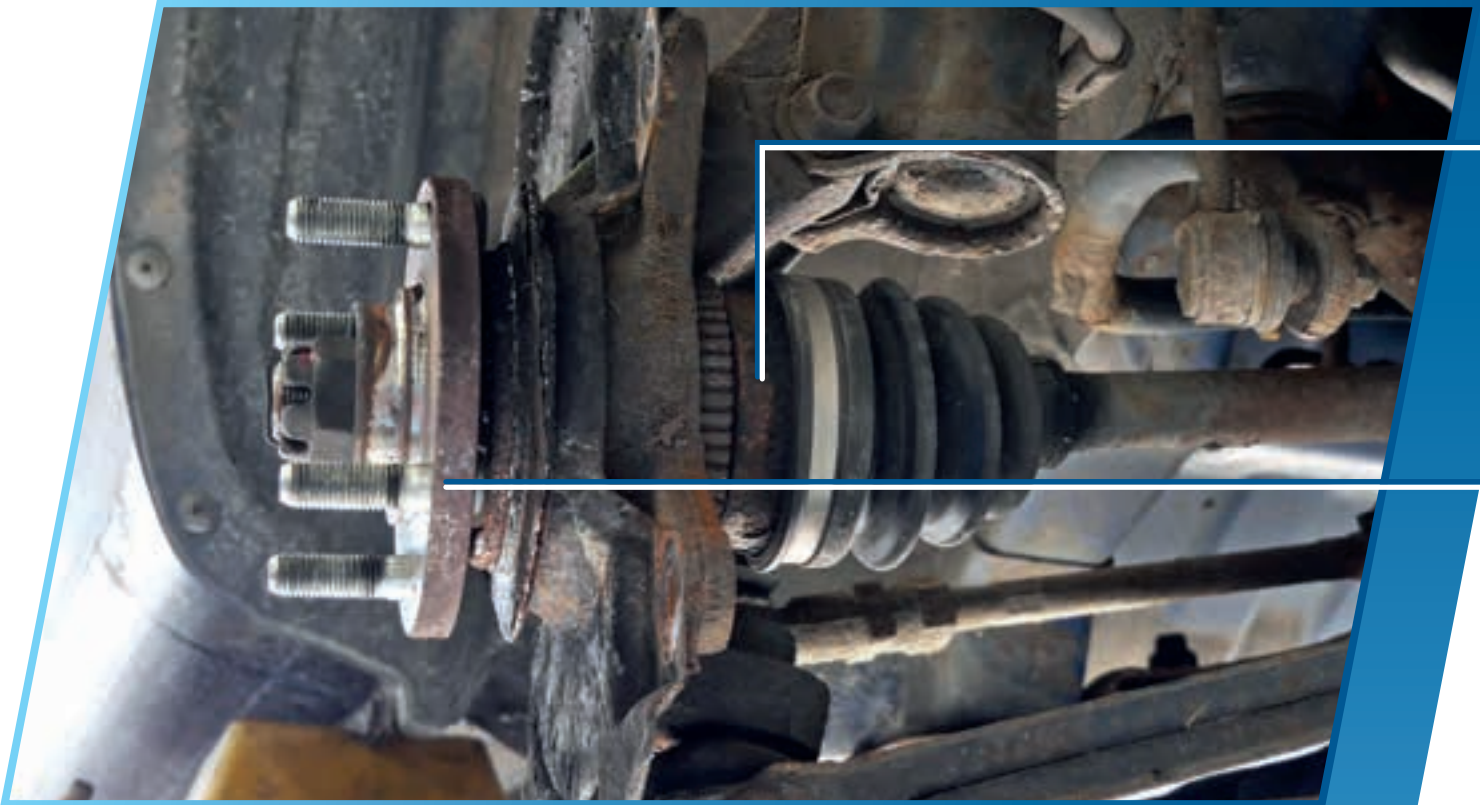
- For a professional removal and installation of the front silent bloc on the wishbone of the front axle
- Hydraulic and mechanical drive possible
- Additional drive parts required!

Suitability: **VW** **AUDI** **SEAT****ŠKODA** **CUPRA**

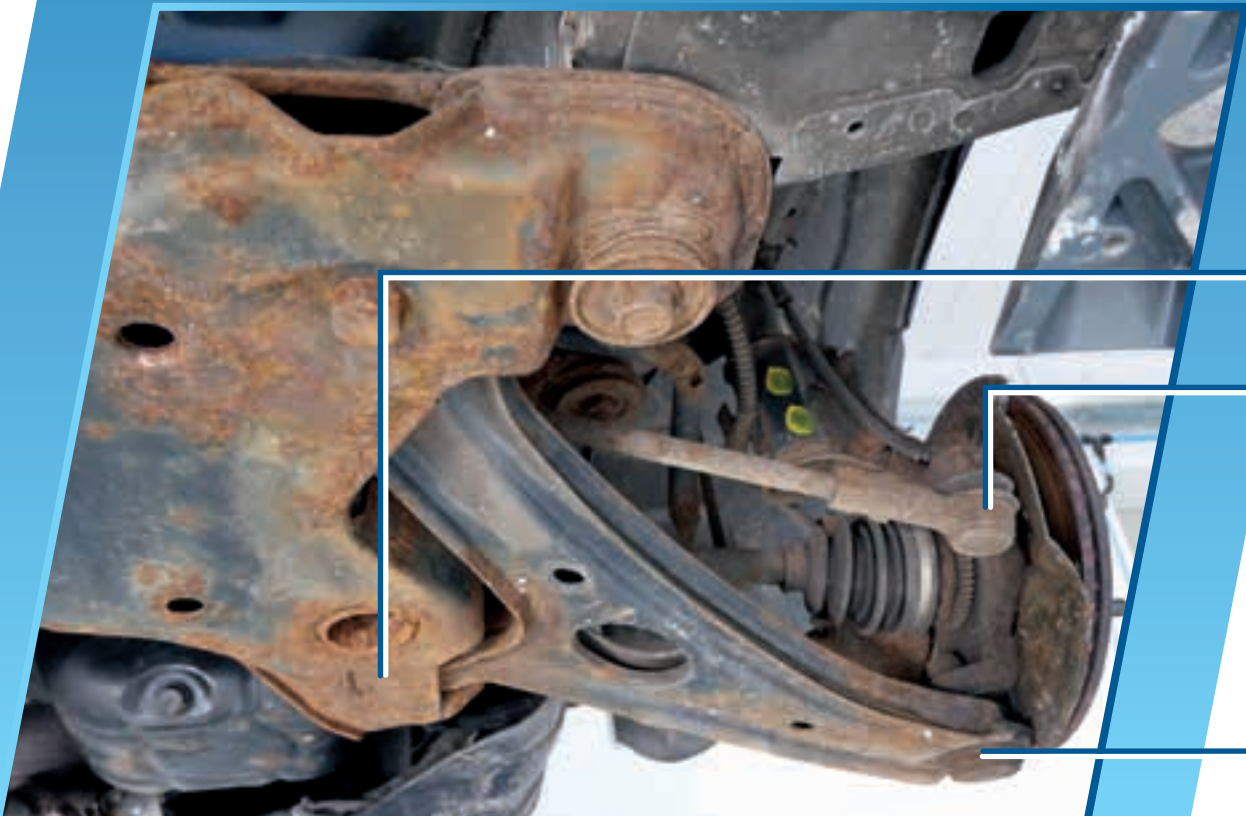
| Code    | Part No.    | Drive type             | Weight |
|---------|-------------|------------------------|--------|
| 2417723 | KL-0214-181 | hydraulic / mechanical | 1.3 kg |



## **MODULO KL-4999-250 / -260 / -270 A**



**MODULO FOR AXLE REPAIRS:**  
*Once invested and perfectly  
equipped for the future!*



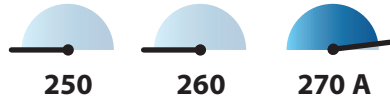


# Drive shaft and wheel bearing/hub



## Wheel bearing inner ring

- Pulling off bearing inner ring
- for example wheel bearing 1st and 3rd generation



## Drive shaft

- Pressing the drive shaft out of the wheel hub
- Drawing the drive shaft into the wheel hub



## Generation 1 wheel bearings

- Pulling off wheel hub
- Removal and installation of wheel bearing
- Installation of wheel hub
- for example also **Mercedes Vito/Viano HA, Audi Q7 HA**



## Generation 2 wheel bearings

- Removal and installation of wheel hub bearing units
- with and without retainer ring
- without load on the new wheel bearing during installation
- for example **VW-Audi, Ford, Mazda, Volvo, ...**



## Generation 3 wheel bearings

- Removal of slightly stuck wheel hub bearing units
- Removal of extremely stuck wheel hub bearing units with **Subaru**, etc.

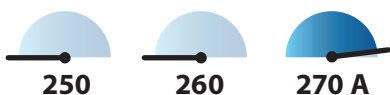


# Silent bloc and ball joint



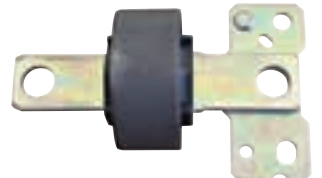
## Ball joint connection

- Removing of ball joint connections
- e.g. suspension joint, tie rod, etc.



## Suspension joint

- Removal and installation of ball joints directly on the vehicle



## Silent bloc

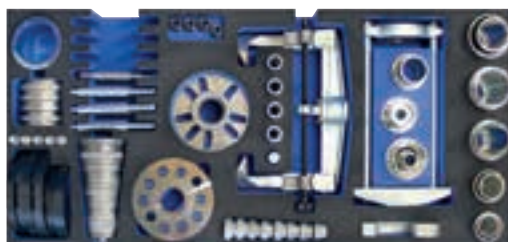
- Removal and installation of the silent blocs directly on the vehicle
- with and without press frame



# MODULO ASSEMBLY TROLLEY

KL-4999-250

## "MODULO 250" ASSEMBLY TROLLEY



Universally applicable for repairs on wheel bearings, steering and axle systems on passenger cars and vans. The ideal, mobile workstation for quick and organized maintenance work.

### Content / range of application:

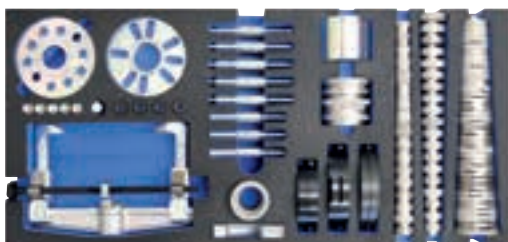
- Various drive parts for operating the tool kits
- Forcing out and forcing in of wheel bearings and wheel hubs
- Removal and forcing in of wheel hubs / wheel bearing units
- Pulling off wishbones from the suspension joint clamping bore
- Forcing out bonded and jammed joint shafts
- Various helpful hand tools

**Suitability:** Universal

| Code    | Part No.       | Width / Depth / Height | Load capacity (static / dynamic) | Number of drawers | Colour     | Contents | Weight |
|---------|----------------|------------------------|----------------------------------|-------------------|------------|----------|--------|
| 3413349 | KL-4999-250    | 1,200 / 635 / 985 mm   | 1,000 / 750 kg                   | 4                 | blue       | 127      | 215 kg |
| 3532658 | KL-4999-250/AT | 1,200 / 635 / 985 mm   | 1,000 / 750 kg                   | 4                 | anthracite | 127      | 215 kg |

KL-4999-260

## "MODULO 260" ASSEMBLY TROLLEY



Universally applicable for repairs on wheel bearings, steering and axle systems on passenger cars and vans.

The ideal, mobile workstation for quick and organized maintenance work.

### Content / range of application:

- Various drive parts for operating the tool kits
- Forcing out and forcing in of wheel hub/bearing units
- Pulling off wishbones from the suspension joint clamping bore
- Forcing out and forcing in of wheel bearings and wheel hubs
- Forcing out bonded and jammed joint shafts
- Forcing out and forcing in of suspension/ball joints, silent blocs and joint bearings
- Pulling off stuck screwed wheel bearing units
- Including helpful hand tools

**Suitability:** Universal

| Code    | Part No.       | Width / Depth / Height | Load capacity (static / dynamic) | Number of drawers | Colour     | Contents | Weight |
|---------|----------------|------------------------|----------------------------------|-------------------|------------|----------|--------|
| 3423468 | KL-4999-260    | 1,200 / 635 / 985 mm   | 1,000 / 750 kg                   | 4                 | blue       | 189      | 245 kg |
| 3532666 | KL-4999-260/AT | 1,200 / 635 / 985 mm   | 1,000 / 750 kg                   | 4                 | anthracite | 189      | 245 kg |

MODULO now also available in anthracite!



KL-0215-35 M25

## HYDRAULIC HAND PUMP with pressure gauge, 17 t

Suitable for hydraulic cylinder KL-0040-2500 and KL-0040-1700.



- Can be used as hydraulic cylinder drive
- With ton scale for controlled working

**Suitability:** Universal

| Code    | Part No.       | Pressure (max.) |
|---------|----------------|-----------------|
| 2478641 | KL-0215-35 M25 | 700 bar         |



KL-0215-36 M25

## HYDRAULIC PUMP, air-operated, 17 t

- Can be used as hydraulic cylinder drive
- Compressed air is used for driving
- Foot pedal with three positions for pumping, holding and relieving
- Both hands are free for the work



**Suitability:** Universal

| Code    | Part No.       | Pressure (max.) | Operation |
|---------|----------------|-----------------|-----------|
| 2478706 | KL-0215-36 M25 | 700 bar         | 8 -       |



Universally applicable for maintenance work on wheel bearings, steering and axle systems on passenger cars and vans.

Made in Germany



KL-4999-270 A

## "MODULO 270 A" ASSEMBLY TROLLEY

Universally applicable for wheel bearings, steering and axle systems  
Repairs of cars and vans.

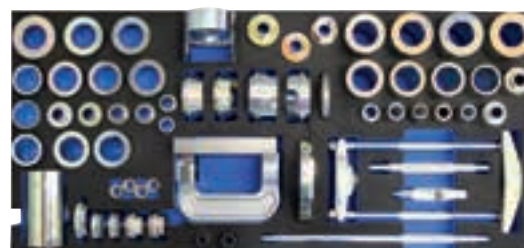
The ideal, mobile workstation for quick and organized maintenance work.

### Content / range of application:

- Various drive parts for operating the tool kits
- Forcing out and forcing in of wheel bearings and wheel hubs
- Forcing out and forcing in of wheel hub/bearing units
- Pulling off wishbones from the suspension joint clamping bore
- Forcing out bonded and jammed joint shafts
- Forcing out and forcing in of suspension/ball joints, silent blocs and joint bearings
- Pulling off stuck screwed wheel bearing units
- Counterholding of wheel hubs when loosening and tightening the wheel bearing central bolt
- Pulling off stuck wheel bearing inner rings from the wheel hub
- Compressing of lug clamps and locking of stepless tension clamps
- Forcing off ball joint connections on steering and axle systems
- Loosening and tightening of inner tie rod joints or axial joints
- **Reshaping of stud bolt threads on the wheel hub**
- **Drawing in cardan shafts**
- Including helpful hand tools

Suitability: Universal

**Hydraulic hand pump included**



| Drive type         | Weight |
|--------------------|--------|
| manual / hydraulic | 7.5 kg |

| Code    | Part No.         | Width / Depth / Height | Load capacity (static / dynamic) | Number of drawers | Colour     | Contents | Weight |
|---------|------------------|------------------------|----------------------------------|-------------------|------------|----------|--------|
| 3460606 | KL-4999-270 A    | 1,200 / 635 / 985 mm   | 1,000 / 750 kg                   | 4                 | blue       | 234      | 275 kg |
| 3532674 | KL-4999-270 A/AT | 1,200 / 635 / 985 mm   | 1,000 / 750 kg                   | 4                 | anthracite | 234      | 275 kg |



| ing pressure | Drive type            | Weight |
|--------------|-----------------------|--------|
| 12 bar       | pneumatic / hydraulic | 8 kg   |

KL-4999-1280

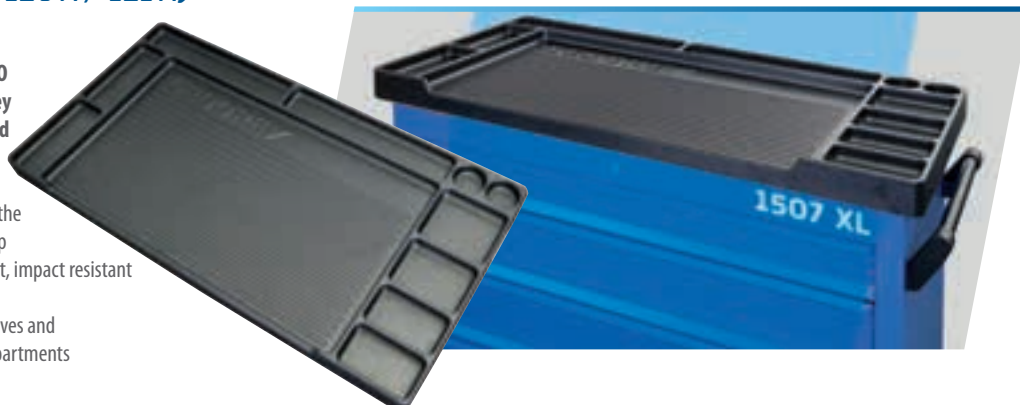
## SURFACE-MOUNT WORKTOP (KL-4999-120 A / -121 A)

Made in Germany



Fits the MODULO workshop trolley KL-4999-12x and 1507 XL.

- To be placed on the wooden worktop
- Extremely robust, impact resistant and oil resistant
- With 2x can shelves and 8x storage compartments



| Code    | Part No.     | Inner plate dimension | Material                                  | Weight |
|---------|--------------|-----------------------|---|--------|
| 3428001 | KL-4999-1280 | 1202 x 639 mm         | Impact and oil resistant ABS hard plastic | 3.2 kg |

KL-0626-11

## PRESS BRACKET SET for ball joints, Ford Transit

Suitable for the lower suspension joints on the front axle of Ford Transit with front or rear-wheel drive. Not suitable for vehicles with all-wheel drive or reinforced chassis!

- For professional replacement of the lower suspension joints
- Pressing out and press in directly on the vehicle
- No removal of brake disc or drive shaft
- To be used similarly to OEM no. Ford 204-288A
- Additional drive parts required (mechanical or hydraulic)!

Suitability: **FORD**



**NEW**

No removal of brake disc or drive shaft



| Code    | Part No.   | Drive type | Weight |
|---------|------------|------------|--------|
| 3533212 | KL-0626-11 | hydraulic  | 6 kg   |

KL-1210-221 A

## SUSPENSION BALL JOINT TOOL SET, Renault/Dacia

Made in Germany



Suitable for suspension joints on Renault and Dacia front axles.

- For professional removal and installation on the control arm
- Also for suspension joints with locking collars (e.g. SIDEM)
- Saves a lot of time
- Can be used directly on the vehicle
- Additional drive parts required (mechanical or hydraulic)!

**Note:** The sleeve set KL-1210-221 A can alternatively also be used on a corresponding stationary press.

Suitability: **DACIA** **RENAULT**

| Code    | Part No.      | Drive type             | Weight |
|---------|---------------|------------------------|--------|
| 3527999 | KL-1210-221 A | hydraulic / mechanical | 1.6 kg |

KL-0039-7533

## SLEEVE SET, Mercedes Sprinter / VW Crafter

Made in Germany



Application video



Suitable for Mercedes Sprinter (W901 - W907) and VW LT / Crafter (2D, 2E, 2F) front axle.

- For a quick and secure removal and installation of the suspension joint on the front lower wishbone
- No removal of the wishbone required
- Additional drive parts (mechanical or hydraulic) required!

Suitability: **VW**  
**MERCEDES**



| Code    | Part No.     | Drive type             | Weight |
|---------|--------------|------------------------|--------|
| 2489708 | KL-0039-7533 | hydraulic / mechanical | 5.1 kg |



KL-0169-1 B

**TRACK ROD ADJUSTMENT TOOL**

Made in Germany



Fits universally for passenger car tie rods with a tube diameter of 11- 23 mm.

- For easily loosening or turning tight-fitting tie rods
- With removable hand tube for confined spaces
- Material-protecting due to wide gripper jaws

Suitability: universal

| Code    | Part No.    | for Ø (min.) | for Ø (max.) | Length base tool | Length | Weight |
|---------|-------------|--------------|--------------|------------------|--------|--------|
| 3283674 | KL-0169-1 B | 11 mm        | 23 mm        | 250 mm           | 420 mm | 1.6 kg |

KL-0112-92 K

**BRAKE CALIPER TOOL SET,  
incl. special nut for the RS/Q7**

Universal fit for brake calliper screw connections on all common vehicle brands.

- Full range with all relevant special and non-standard inserts
- Exclusive selection of special profiles for Audi, Porsche and Mercedes
- Optimised hexagon socket inserts with ball head for easier accessibility
- Includes special profile inserts in 5-, 7- and 10-sided designs
- Compatible with one-piece and two-piece brake calipers

**NEW****Content:**

Screwdriver bits with ball head  
Special screwdriver bits  
Screwdriver bits, short  
Special socket spanner inserts



| Code    | Part No.     | Drive (square) | Storage | Contents | Weight |
|---------|--------------|----------------|---------|----------|--------|
| 3518264 | KL-0112-92 K | 1/4" 3/8" 1/2" | in case | 18       | 1.5 kg |

KL-0221-100

**SOCKET, 3/8", ERP**

Suitable for rear axle brake calipers with electric parking brake on VW-Audi vehicles.

- Special socket with 5-tooth special profile
- For professional turning back of the brake caliper to its original position
- Required before installing the electric parking motor

Suitability: universal, especially for:



| Code    | Part No.    | Profile       | Drive (square) | Length | Weight |
|---------|-------------|---------------|----------------|--------|--------|
| 3478424 | KL-0221-100 | EPB (5-tooth) | 3/8"           | 40 mm  | 50 g   |

KL-0186-80 K

**PNEUMATIC INJECTOR EXTRACTOR,**  
*in patented protective housing*



Universal fit for BOSCH and DELPHI diesel injectors with M17x1 female thread and M14x1.5 male thread, for example on PSA, Fiat, Mercedes, VW-Audi, Renault, Nissan, Opel, Toyota, etc.  
Suitable for other injectors with the supplementary kits KL-0186-128x A or KL-0186-9x.

- For quick, semi-automatic extraction of tight-fitting injectors
- Extremely high impact frequency for loosening coking and rust
- Compact design for confined spaces
- Internal impact weight for high safety
- CE certified safety: No exposed, moving parts
- Safety shut-off: Shut-off by releasing the hand switch
- Suitable for many other injectors due to the supplementary kits **KL-0186-128x A** or **KL-0186-9x**



Suitability: universal, especially for:



| Code    | Part No.     | for injectors from | for internal thread | for external thread | for engine type | Mounting thread | Drive type | Storage | Weight |
|---------|--------------|--------------------|---------------------|---------------------|-----------------|-----------------|------------|---------|--------|
| 3461602 | KL-0186-80 K | Bosch / Delphi     | M17x1               | M14x1.5             | Diesel          | M16x1.5         | pneumatic  | L-BOXX  | 6 kg   |

KL-0186-903

**INJECTOR EXTRACTOR SET,**  
*supplement to pneum. injector extractor*



Universally fits Bosch and Siemens/VDO injectors with a removable fuel connection with M12x1 internal thread (45° angled). E.g. on VW-Audi, BMW, Mercedes and PSA.

- For professional extraction of stuck injectors
- Suitable for many other injectors thanks to the **KL-0186-9x** expansion kits
- Only in combination with **KL-0186-80 K**



Suitability: universal, especially for: **MERCEDES** **PSA** **VW** **AUDI**  
**SEAT** **ŠKODA** **BMW**

| Code    | Part No.    | for injectors from              | for internal thread | Angle | for engine type | Drive type | Weight |
|---------|-------------|---------------------------------|---------------------|-------|-----------------|------------|--------|
| 3461610 | KL-0186-903 | Bosch, Continental, Siemens/VDO | M12x1               | 45°   | Diesel          | pneumatic  | 1.1 kg |



KL-0186-540 E

## INJECTOR BORE CLEANING KIT

Made in Germany



Universal fit for Diesel engines.

- For easy cleaning of the injector bore

Suitability: universal

| Code    | Part No.      | for motor type | Storage          | Width  | Depth  | Height | Weight |
|---------|---------------|----------------|------------------|--------|--------|--------|--------|
| 3415252 | KL-0186-540 E | Diesel         | in a foam insert | 272 mm | 189 mm | 50 mm  | 450 g  |

KL-0186-24

## INJECTOR EXTRACTOR, Mercedes OM642

Made in Germany



Suitable for Mercedes-Benz, Chrysler and Jeep with 3.0 litre 6-cylinder diesel engines of the OM642 series.

- For removing injectors directly from the vehicle
- Even distribution of force
- Ideal for extremely stuck injectors
- Without removing the cylinder head
- Compact design for confined spaces
- No lowering of the engine necessary
- Alternative solution to the Mercedes-Benz OEM tool: W355589016300 + W642589013300

**NEW**



Suitability: **CHRYSLER** **JEEP** **MERCEDES**

| Code    | Part No.   | for external thread | for engine type | Drive type | Drive (hex) | Length | Width | Weight |
|---------|------------|---------------------|-----------------|------------|-------------|--------|-------|--------|
| 3475581 | KL-0186-24 | M14x1.5             | Diesel          | mechanical | 24.0 mm     | 185 mm | 90 mm | 2 kg   |

KL-4021-400...

## SCREWDRIVER BIT SOCKET, 3/8"



KL-4021-4005

Especially suitable for oil tank screw connections of VW, Audi, Seat and Skoda.

- For loosening and tightening of hexagon socket head screws that are difficult to access
- Sturdy ball head profile
- Extra-long round shank

**NEW**



KL-4021-4005

KL-4021-4006

Particularly on the gearbox flanged shaft on VW, Audi, Seat and Skoda, especially also on the insert shaft of the 4-Motion all-wheel drive angular gearbox.

- For loosening and tightening of hexagon socket screws that are difficult to access
- Extra-long shaft



KL-4021-4006



Suitability: universal, especially for: **VW** **AUDI** **SEAT** **ŠKODA**

| Code    | Part No.     | Size (waf) | Profile | Drive (square) | Load (max.) | Version           | Length | Weight |
|---------|--------------|------------|---------|----------------|-------------|-------------------|--------|--------|
| 3468135 | KL-4021-4005 | 5 mm       | Hexagon | 3/8"           | 50 Nm       | with ball head    | 300 mm | 150 g  |
| 3468143 | KL-4021-4006 | 6 mm       | Hexagon | 3/8"           | 50 Nm       | without ball head | 350 mm | 150 g  |

3550-UK-LS4

**TORQUE WRENCH****TORCOFLEX UK Set 1/2" 40-200 Nm**

Better readability because of magnifying effect

Made in Germany



Application video

- Wrench sockets for the machine-operated disassembly of wheel bolts/nuts
- Tightening range of 40-200 Nm with test certificate
- Better readability of setting because of magnifying effect
- Reversible ratchet with clockwise and anti-clockwise rotation
- Triggering accuracy of  $\pm 4\%$  tolerance of the set scale value
- Wrench sockets with plastic sleeves for working without causing any damage
- Available in AF 17, 19 and 21 with colour coding



| Code    | Part No.    | Drive (square) | Torque (min.) | Torque (max.) | Vernier | Precision | Tightening direction | Length | Width | Height | Weight |
|---------|-------------|----------------|---------------|---------------|---------|-----------|----------------------|--------|-------|--------|--------|
| 3107027 | 3550-UK-LS4 | 1/2"           | 40 Nm         | 200 Nm        | 1 Nm    | $\pm 3\%$ | Right                | 499 mm | 44 mm | 44 mm  | 2.4 kg |

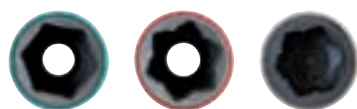


KL-0100-80 K

**SPECIAL IMPACT SOCKET SET****1/2", 3-part**

Suitable for Mercedes, Tesla, Hyundai and Kia with special profile.

- For loosening and tightening wheel bolts
- Slim version with plastic sleeve



Suitability:

**HYUNDAI** **KIA** **MERCEDES** **TESLA**


| Code    | Part No.     | Profile          | Drive (square) | Contents |
|---------|--------------|------------------|----------------|----------|
| 3427692 | KL-0100-80 K | Special profiles | 1/2"           | 3        |



KL-0100-81 K

**IMPACT SOCKET SET,****half sizes, 1/2", 6-part**

Suitable for wheel studs/bolts with half sizes 16.5 - 21.5 mm (waf).

- For loosening and tightening wheel bolts / nuts
- Required for damaged chrome bolts / nuts
- Half a spanner size smaller in case of missing chrome cap
- Half a spanner size larger in case of extended chrome cap (corrosion)



Suitability: universal, especially for: **FORD** **JEEP** **RANGE ROVER**

| Code    | Part No.     | Profile | Drive (square) | Contents |
|---------|--------------|---------|----------------|----------|
| 3427773 | KL-0100-81 K | hexagon | 1/2"           | 6        |

KL-0173-4620 K

**THREAD RE-FORMING TOOL SET****THREAD RESET**

- Thread re-forming tool set for threads M3-M16
- Infinitely adjustable base carrier
- Thread is deformed back to its original geometry with absolutely no cutting by rolling
- Strength of the thread is completely retained
- In a practical plastic case with insert

Suitability: universal

**NEW**

| Code    | Part No.       | for Thread | Thread type       | Pitch  | Weight |
|---------|----------------|------------|-------------------|--|--------|
| 3291375 | KL-0173-4620 K | M3 - M16   | Right-hand thread | 0,8 mm; 1,0 mm; 1,25 mm; 1,5 mm; 1,75 mm; 2,0 mm | 1.1 kg |



KL-0173-601 A

## RE-THREADING TOOL SET for wheel studs (M12x1.25 + M14x1.5)

Universally applicable on wheel studs and wheel bolts with M12x1.25 and M14x1.5 thread.

- Quick and cost-saving rethreading of damaged threads
- The thread is formed back to its original geometry
- No material is removed in the process
- The strength of the wheel studs or the wheel bolts is completely maintained
- Compact design

Suitability: universal



| Code    | Part No.      | for Thread         | Drive (hex) | Weight |
|---------|---------------|--------------------|-------------|--------|
| 3461904 | KL-0173-601 A | M12x1.25   M14x1.5 | 41 mm       | 430 g  |



## THREAD RESET®



Application video

KL-0173-612 A

## RE-THREADING TOOL for wheel studs (M12x1.5)

Universally applicable on wheel studs and wheel bolts with M12x1.5 thread.

- Quick and cost-saving rethreading of damaged threads
- Thread is remoulded to its original geometry
- No material removal
- Strength of the wheel bolts/screws is retained
- Compact design
- Including pipe socket wrench 41 mm (waf)
- Thread size covers approx. 80 % of vehicles with wheel studs!

Suitability: universal



| Code    | Part No.      | for Thread | Drive (hex) | Weight | Weight |
|---------|---------------|------------|-------------|--------|--------|
| 3461874 | KL-0173-612 A | M12x1.5    | 41 mm       | 240 g  | 240 g  |

KL-0115-100

## WHEEL HUB/RIM FLANGE GRINDER

Universal use on wheel hubs as well as steel and aluminium rims on cars and vans.

- For quick cleaning of the wheel hub and the rim contact surface
- Solid corrosion residues can be removed easily
- Includes 1 x wheel hub disc, 1 x rim flange disc

Suitability: universal



| Code    | Part No.     | Description                        | Drive (hex) | Speed (max.) | Outer Ø | Ø                 | Weight |
|---------|--------------|------------------------------------|-------------|--------------|---------|-------------------|--------|
| 3463893 | KL-0115-100  | Wheel hub/rim flange grinder       | 7/16"       | 1500 ~U/min  | 160 mm  | -                 | 700 g  |
| 3463907 | KL-0115-1001 | Spare disc set, wheel hub, 3 pcs.  | -           | 1500 ~U/min  | 160 mm  | Inner-Ø 75 mm     | 500 g  |
| 3463915 | KL-0115-1002 | Spare disc set, rim flange, 3 pcs. | -           | 1500 ~U/min  | 160 mm  | Outer-Ø (2) 50 mm | 700 g  |



KL-0115-200

## WHEEL HUB GRINDER

for studs, cars and vans

Universal use on wheel hubs with wheel studs on cars and vans.

- For quick cleaning of the rim contact surface
- Solid corrosion residues can be removed easily
- Patented quick-change holder for precise centring between the base body and the grinding disc



| Code    | Part No.    | Drive (square) | Outer Ø | Outer Ø (2) | Weight |
|---------|-------------|----------------|---------|-------------|--------|
| 3463931 | KL-0115-200 | 1/2"           | 50 mm   | 40 mm       | 500 g  |

KL-0101-120

## ADHESIVE WEIGHT REMOVER

Universally applicable for balancing work on aluminium rims, inner linings, trims and much more.

- For easy removal of adhesive weights on aluminium rims
- Extremely flexible, 3-sided plastic blade
- No damage to the paintwork
- Sturdy handle for using a hammer



| Code    | Part No.    | Blade shape | Blade length | Blade width | Blade thickness | Length |
|---------|-------------|-------------|--------------|-------------|-----------------|--------|
| 3463869 | KL-0101-120 | Flat        | 150 mm       | 20.0 mm     | 7.5 mm          | 305 mm |

KL-0101-121

## ADHESIVE ERASER DISC SET, 2 PCS.



For universal use on aluminium rims and other metallic surfaces.

- For easy removal of adhesive residues
- Easy to use with conventional axial grinders, cordless screwdrivers or drills
- Mounting with 5/16" thread or the Ø 9 mm drill chuck adapter

| Code    | Part No.    | Mounting thread | Mounting diameter | Speed (min.) | Speed (max.) | Outer Ø | Weight |
|---------|-------------|-----------------|-------------------|--------------|--------------|---------|--------|
| 3463877 | KL-0101-121 | 5/16"           | 9 mm              | 500 ~U/min   | 1000 ~U/min  | 60 mm   | 300 g  |

KL-4600-200

## TOOL TROLLEY

with a high-voltage range, 103 pcs.

- The perfect tool kit for maintenance and repairs on hybrid and electric vehicles
- Suitable for vehicles of all manufacturers
- All tools are protective insulated to EN 60900/EC 60900
- **Tool trolley:** Side walls with Euro perforation, externally mounted heavy-duty chassis, ball-bearing guide rails, and central lock
- **Includes:** digital voltage tester, 3/8" VDE torque spanner, safety lock, sockets and ratchet 3/8" and 1/2" and many more



Suitability: universal

| Code    | Part No.    | Width  | Height | for engine type   | Load capacity (static) | Load capacity (dynamic) | Drawer type    | Number of drawers | Colour | Weight |
|---------|-------------|--------|--------|-------------------|------------------------|-------------------------|----------------|-------------------|--------|--------|
| 3415740 | KL-4600-200 | 475 mm | 985 mm | Electric / Hybrid | 900 kg                 | 650 kg                  | full extension | 6                 | red    | 96 kg  |



KL-0860-100

## BRAKE FLUID TESTER



Can be used universally on conventional DOT 3, DOT 4 and DOT 5.1 glycol-based brake fluids.

- For professional testing of water content in the brake fluid
- Quick and precise measurement of the water content in %
- High measuring range from 0.1 % to 6.0 %
- Simple operation
- 2" LCD display with backlighting
- Visual and audible alarm function
- Measuring probe dust and water protected to IP67
- Power supply with 9V battery (not included!)

| Code    | Part No.    | Measuring range (min. - max.) | Display | Length (cable) | Wire Ø | Temperature range | Length | Weight |
|---------|-------------|-------------------------------|---------|----------------|--------|-------------------|--------|--------|
| 3467058 | KL-0860-100 | 0.1 - 6 %                     | 2,0"    | 270 mm         | 5.9 mm | -10 °C - +50 °C   | 450 mm | 120 g  |

KL-0880-20

## INFRARED THERMOMETER

Universally applicable, e.g. in the industrial, construction and automotive sectors.

- For quick, non-contact temperature measurement
- Also for hard-to-reach objects and liquids
- Robust infrared thermometer in industrial quality
- High temperature measuring range from -50 to +550 °C
- Very high measuring accuracy due to adjustable emissivity detection
- Red 12-point laser target detection (can be switched off)
- Illuminated 1.5" LCD colour display
- Measured value hold function with min/max recording
- Adjustable LED warning light when temperature limit value is under/exceeded



| Code    | Part no.   | Measuring range (min.) | Measuring range (max.) | Measuring accuracy | Measurement duration | Display | Laser colour | Adjustable emissivity | Battery type | Automatic switch-off |
|---------|------------|------------------------|------------------------|--------------------|----------------------|---------|--------------|-----------------------|--------------|----------------------|
| 3475840 | KL-0880-20 | -50 °C                 | +550 °C                | 1.5 %              | 0.5 sec.             | 1.5"    | Red          | 0.1 to 1.0            | AAA          | 30 sec.              |

KL-0840-100 K

## DIGITAL BATTERY TESTER



Universally applicable for vehicles with 6/12/24 volt LEAD, GEL, AGM, EFB and LITHIUM batteries.

- For professional checking and logging of the status of the battery, generator and starter
- Supports 9 battery standards according to EN, DIN, IEC, SAE, CA, CCA, BCI, MCA and JIS
- Testing of the battery in assembled or disassembled state
- Test log output via thermal printer
- Real-time monitoring inside the vehicle by means of a 2.50 m measuring line
- Simple, menu-guided operation in 13 languages
- Fully insulated crocodile clips and integrated reverse polarity protection

| Code    | Part no.      | Voltage range     | Nominal capacity (min. - max.) | for battery type   | Display | Operating temperature | Battery capacity | Weight |
|---------|---------------|-------------------|--------------------------------|--|---------|-----------------------|------------------|--------|
| 3477185 | KL-0840-100 K | 6 V / 12 V / 24 V | 1 Ah - 260 Ah                  | AGM battery, AGM spiral cell battery, lead acid battery, EFB battery, GEL battery, lithium battery | 3.2"    | 0- 50 °C              | 2.000 mAh        | 2.3 kg |



# MICRO-VIDEOSCOPES / VIDEOSCOPE

KL-0880-10 K

## MICRO VIDEOSCOPE Ø 3.9 mm

Universally applicable on passenger cars, vans, commercial vehicles, buses, construction machinery, agricultural machinery.

- Enables quick and easy inspection of extremely difficult-to-access components
- For professional damage analysis on engines, transmissions, intake systems, etc.
- Extremely slim Ø 3.9 mm micro camera with 1280 x 720 pixels
- Dust- and water-proof lens with adjustable LED illumination
- ±180° swivel angle due to 2-way joint
- Live viewing via 5.0" HD colour display with zoom, rotate and mirror function
- Photo and video documentation with date and time stamp
- Incl. 8 GB microSD card and powerful 3.7 V lithium-polymer battery (5000 mAh)
- Connection with smartphone, tablet and laptop etc. possible
- Direct playback of photos and videos on the display

### Features:

- ±180° swivel angle due to 2-way joint
- 1 m cable length
- 5" display
- 1280 x 720 pixel resolution
- LEDs (6 pcs. / 3 levels)
- Temperature range -10 °C – +60 °C
- 5,000 mAh lithium-polymer battery



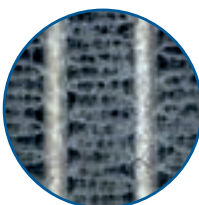
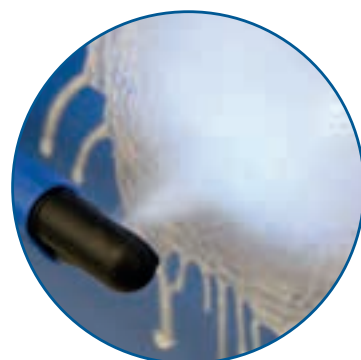
KL-8090-402

## VIDEOSCOPE "SPECIAL OFFER"

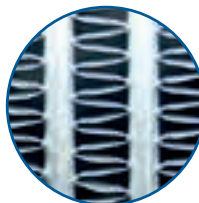
KL-0880-10 K - Micro-Videoscope, Ø 3.9 mm see left.

### KL-0870-10 K - Videoscope with cleaning function

- Enables the localisation and targeted removal of contamination
- Versatile use on the vehicle
- The transversely mounted camera with LED illumination and cleaning nozzle reaches even hard-to-reach places, e.g. the evaporator of the air-conditioning system
- Slim camera unit Ø 15x23 mm with powerful cleaning nozzle
- Dust- and water-proof lens with adjustable LED illumination
- For standard compressed air connection with 6 - 8 bar
- 250 ml container for cleaning fluids
- Live viewing via 3.5" colour display with zoom, rotate and mirror function
- Photo and video documentation with date/time stamp
- Incl. 8 GB microSD card and powerful 3.7 V lithium-polymer battery (1,650 mAh)
- Direct playback of photos and videos on the display



before



after



| Code    | Part No.     | Swivel angle | Cable Ø (max.) | Length (cable) | Battery   | Temperature range |
|---------|--------------|--------------|----------------|----------------|-----------|-------------------|
| 3444910 | KL-0880-10 K | +/- 180°     | 3.9 mm         | 1 m            | 5.000 mAh | -10 °C – +60 °C   |

| Code    | Part No.    | Resolution         | Swivel angle |
|---------|-------------|--------------------|--------------|
| 3469913 | KL-8090-402 | 1280x720 / 720x625 | +/- 180°     |

## NEW



KL-0880-11 K

### 360° MICRO VIDEOSCOPE Ø 3.9 mm with 4-way joint

Universally applicable on cars, vans, commercial vehicles, buses, construction machinery, agricultural machinery.

- Enables quick and easy inspection of extremely difficult-to-access components
- For professional damage analysis on engines, transmissions, intake systems, etc.
- Dust- and water-proof lens with adjustable LED illumination
- $\pm 180^\circ$  swivel angle in a 4-way articulation
- Live viewing via 5.0" HD colour display with zoom, rotate and mirror function
- Photo and video documentation with date and time stamp
- incl. 32 GB microSD card and powerful 3.7 V lithium-polymer battery
- Direct playback of photos and videos on the display

#### Features:

- $\pm 180^\circ$  in all directions ( $360^\circ$ )
- 1.2 m cable length
- 5" display
- 1280 x 720 pixel resolution
- LEDs (6 pcs. / 5 levels)
- Temperature range  $-10^\circ\text{C} - +60^\circ\text{C}$
- 6,000 mAh lithium-polymer battery
- Ergonomic handle
- Easy handling thanks to joystick and photo release by pistol trigger
- Camera lens protected against dust and water in accordance with IP67
- Storage in assembled state (handle and display)

**Free of Charge!**



| Angle | Angle | Cable Ø (max.) | Storage   |
|-------|-------|----------------|-----------|
| 30°   | 90°   | 3.9 / 23 mm    | in a case |

| Code    | Part No.     | Swivel angle     | Cable Ø (max.) | Length (cable) | Battery   | Temperature range                       |
|---------|--------------|------------------|----------------|----------------|-----------|---|
| 3517381 | KL-0880-11 K | +/- 180° (4-way) | 3.9 mm         | 1.20 m         | 6,000 mAh | $-10^\circ\text{C} - +60^\circ\text{C}$ |



KL-4067-100 / -200  
**SOCKET WRENCH SET, ERP**



Universally suitable for 5-edge EPR-TX Plus external profile screw fittings, such as Tesla, Ford, GM and many others, e.g. on electrical connections, high-voltage batteries, pyro fuses, bumpers, etc.

- For loosening and tightening screw connections
- Incl. strip

**NEW**

Suitability: universal, especially for:

**FORD** **GM** **TESLA**

| Code    | Part No.    | Profile                  | Drive (square) | Content                           | Storage     | Contents |
|---------|-------------|--------------------------|----------------|-----------------------------------|-------------|----------|
| 3467880 | KL-4067-100 | ERP TX-Plus (pentagonal) | 1/4"           | EPR TX-Plus 6, 7, 8, 10, 11 mm    | Plug-in bar | 5        |
| 3468003 | KL-4067-200 | ERP TX-Plus (pentagonal) | 3/8"           | EPR TX-Plus 12, 14, 16, 18, 20 mm | Plug-in bar | 5        |

KL-4007-260  
**DEFLECTION ADAPTER KIT, 90°, 6 pieces**

Universally applicable in everyday workshop use.

- Unique deflection adapter kit for 1/4", 3/8" and 1/2" drives
- For reaching extremely difficult to reach bolt connections
- Enables an offset of the drive axle and deflection of the drive force
- Can also be combined with other adapters and extensions
- 2x deflection adapters each per size



Application example, not included in the scope of delivery

**NEW**



| Code    | Part No.    | Drive (square) | Angle | Storage           | Contents | Weight |
|---------|-------------|----------------|-------|-------------------|----------|--------|
| 3517330 | KL-4007-260 | 1/4" 3/8" 1/2" | 90°   | in plastic insert | 6        | 250 g  |



Application video



KL-4007-500

## WRENCH EXTENSION, universal, 380mm

Fits universally for hand tools.

- For a simple extension of spanners and hexagon L keys
- Also for hard-to-reach bolt connections

Suitability: universal



| Code    | Part No.    | Length | Weight |
|---------|-------------|--------|--------|
| 3406504 | KL-4007-500 | 380 mm | 650 g  |

KL-4007-328

## EXTENSION SET, 1/2", extra long

**NEW**



Universally applicable.

- 3-piece extension set for 1/2" drive
- Extra long version in 455 / 610 / 910mm
- Spring-loaded ball lock with lock function
- Ideal e.g. for gearboxes, drive and cardan shaft screw connections
- High flexural strength for hard permanent loads

**Content:**

- 1x 1/2"-Extension 455 mm
- 1x 1/2"-Extension 610 mm
- 1x 1/2"-Extension 910 mm



| Code    | Part No.    | Output drive (square) | Drive (square) | Contents | Weight |
|---------|-------------|-----------------------|----------------|----------|--------|
| 3529908 | KL-4007-328 | 1/2"                  | 1/2"           | 3        | 3.5 kg |

666-045

## TORSION BIT SET, 45 pieces



- Comprehensive range with the most common bit profile sizes
- Bits with torsion zone to protect the bit profile from wear
- Colour coding simplifies profile recognition and assignment
- 1/4" square adapter for more flexibility

| Code    | Part No. | Length | Width  | Height | Contents | Weight |
|---------|----------|--------|--------|--------|----------|--------|
| 3459519 | 666-045  | 190 mm | 120 mm | 45 mm  | 45       | 570 g  |

# ***LOCKING TOOLS***



- For precise positioning of the camshafts
- For locking the flywheel and timing belt pulley
- For professional adjustment of the timing
- With highly sensitive angle gauge for camshaft positioning
- No OBD interactions or complex diagnostic technology required



## TORQUE WRENCH

**GEDORE**  red



- 

| Code    | Part No.  | Drive (square) | Torque range (min./max.) | Vernier | Precision | Return angle | Tightening direction | Length | Weight |
|---------|-----------|----------------|--------------------------|---------|-----------|--------------|----------------------|--------|--------|
| 3301217 | R68900200 | 1/2"           | 40 Nm - 200 Nm           | 1 Nm    | +/- 3 %   | 7,5 °        | Left and right       | 485 mm | 1.4 kg |
| 3301218 | R68900300 | 1/2"           | 60 Nm - 300 Nm           | 1 Nm    | +/- 3 %   | 7,5 °        | Left and right       | 575 mm | 1.5 kg |

## IMPACT SOCKET WRENCH SET

**1/2", 3 pieces**

- Especially for mounting/dismounting car wheels
- Plastic sleeves for damage-free work on aluminum rims
- Color coding facilitates identification
- Machine-operated, secured by retaining ring/pin
- In a sturdy plastic case



**GEDORE**  **red**



| Code    | Part No.  | Drive (square) | Locking         | Material                | Length | Width  | Height | Weight |
|---------|-----------|----------------|-----------------|-------------------------|--------|--------|--------|--------|
| 3300578 | R63043003 | 1/2"           | Cirdlip and pin | Chrome-molybdenum steel | 155 mm | 135 mm | 52 mm  | 830 g  |

**TOOL SET IN  
WORKSHOP TROLLEY**

**GEDMaster, 273 pieces**

Made in Austria



- Comprehensive range for industry, trade, automotive and the advanced DIY enthusiast
- Tools in metric dimensions
- Completeness check thanks to 2-colour foam inserts
- All drawers with full-extension runners and ball-bearing guide rails
- 7 drawers (internal dimensions W 563 x D 398 x H 70 mm / H 145 mm)
- Load capacity per drawer 40 kg
- Total load capacity 400 kg
- 2 x fixed castors Ø 140 mm and 2 x swivel castors Ø 100 mm (1x with total brakes)
- Side panels with Euro perforations 10 x 38 mm for attaching accessories



| Code    | Part No.  | Number of drawers | Load capacity, drawer | Load capacity (static) | Colour   | Material    | Length | Width  | Height | Weight  |
|---------|-----------|-------------------|-----------------------|------------------------|----------|-------------|--------|--------|--------|---------|
| 3301678 | R22071005 | 7                 | 40 kg                 | 400 kg                 | RAL 9005 | Sheet steel | 790 mm | 470 mm | 999 mm | 88.5 kg |

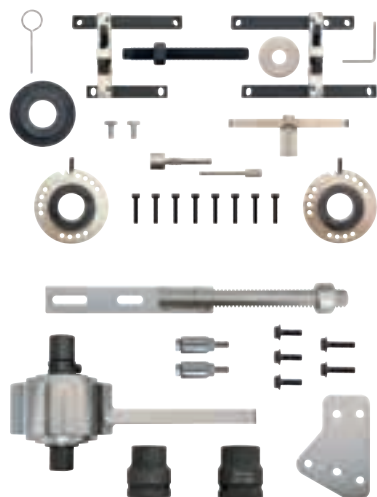


R15002100

## LOCKING TOOL KIT with torque multiplier (Ford)

Suitable for 3 cylinder Ford 1.0 + 1.1 petrol engines.

- For locking the camshafts, crankshaft, timing belt tensioner and flywheel
- For adjusting the camshaft phasing unit
- For pressing in the crankshaft sealing ring
- Including torque multiplier



Suitability: **FORD**

| Code    | Part No.  | for engine type | Storage   | Width  | Depth  | Height | Weight |
|---------|-----------|-----------------|-----------|--------|--------|--------|--------|
| 3301771 | R15002100 | Petrol          | in a case | 380 mm | 350 mm | 225 mm | 14 kg  |

Also available separately:

| Code    | Part No.  | for engine type | Storage   | Content                                 | Weight |
|---------|-----------|-----------------|-----------|---|--------|
| 3301769 | R15003000 | Petrol          | in a case | Locking tool, Ford (1.0 / 1.1 EcoBoost) | 6 kg   |
| 3301770 | R15003001 | Petrol          | in a case | Torque Multiplier, Ford                 | 8 kg   |

R15003005

## LOCKING TOOL SET, PSA/Stellantis (1.0 / 1.2, 3-cyl.)

Suitable for Citroën, Peugeot, Fiat and Opel with 1.0 / 1.2 (VTi, e-VTi, THP, PureTech) 3-cylinder petrol engines of the EB series (PSA/Stellantis) with internal timing belt running in oil.

- For locking the intake and exhaust camshaft, flywheel and timing belt tensioner
- For professional adjustment of the timing
- Includes test gauge to check the timing belt width for possible swelling
- To be used similarly to OEM no. 0109-2A, 0109-2B, 0109-2C, 0109-2D, 0109-2E, 0109-2E1, 0109-2E2, 0109-6, 0188-Q1, 0197-N, EN-52127-2

Suitability: **CITROEN** **FIAT** **OPEL** **PEUGEOT** **TOYOTA**

**NEW**



| Code    | Part No.  | for engine type | Width  | Depth  | Height | Weight |
|---------|-----------|-----------------|--------|--------|--------|--------|
| 3301782 | R15003005 | Petrol          | 470 mm | 330 mm | 100 mm | 4.6 kg |

R15003003

**LOCKING TOOL SET**, including digital angle gauge,  
VW-Audi (1.0 / 1.2 / 1.4 / 1.5 TSI/TFSI)

GEDORE 



Suitable for VW, Audi, Seat, Cupra and Škoda with 1.0 / 1.2 / 1.4 / 1.5 (TSI, TFSI)  
3 and 4-cylinder petrol engines of the EA211 series.

- For precise positioning of the camshafts
- For locking the flywheel and timing belt pulley
- For professional adjustment of the timing
- With highly sensitive angle gauge for camshaft positioning
- No OBD interactions or complex diagnostic technology required
- Cost-effective and practical alternative solution to the OEM tool VAS 611 007
- Can be used in a similar way to OEM no. T10340, T10499, T10504/1

**NEW**



Suitability:



| Code    | Part No.  | for engine type | Width  | Depth  | Height | Weight |
|---------|-----------|-----------------|--------|--------|--------|--------|
| 3301780 | R15003003 | Petrol          | 470 mm | 330 mm | 100 mm | 6.1 kg |

R15003006

**LOCKING TOOL SET**,  
VW-Audi (1.0/1.2/1.4/1.6 FSI/MPI/TSI/TFSI)

GEDORE 



Suitable for VW, Audi, Seat and Škoda with 1.0 / 1.2 / 1.4 / 1.6 (FSI, TSI, TFSI, MPI)  
3 and 4-cylinder petrol engines of the EA211 series.

- For locking the intake and exhaust camshaft, flywheel and positioning the timing belt tensioner
- For professional adjustment of the timing
- To be used similarly to OEM no. T10060 A, T10340, T10476, T10476 A, T10477, T10487, T10494, T10499, T10504, T10504/1, T10504/2

Suitability:    

**NEW**



| Code    | Part No.  | for engine type | Width  | Depth  | Height | Weight |
|---------|-----------|-----------------|--------|--------|--------|--------|
| 3301783 | R15003006 | Petrol          | 470 mm | 330 mm | 100 mm | 3.8 kg |

R15003002

**PNEUMATIC INJECTOR EXTRACTOR**GEDORE 

Universally suitable for diesel injectors from Bosch, Delphi, Denso, Siemens-VDO, Continental, Lucas, Magneti Marelli, etc.

- For easy removal of stuck diesel injectors
- High-frequency impact mechanism effectively removes coking and rust deposits
- Compact design for confined spaces
- Integrated stopcock for targeted regulation of the air supply
- Extensive selection of adapters for injectors with male or female threads
- Draw hook adapter with shaft diameter: 12 / 13.5 / 16 mm
- Also for extremely deep-seated injectors

Suitability: universal

**NEW**

| Code    | Part No.  | for injectors from  | for internal thread  | for external thread   | for engine type | Mounting thread | Drive type | Working pressure (max.) |
|---------|-----------|---|--|---|-----------------|-----------------|------------|-------------------------|
| 3301779 | R15003002 | Bosch, Continental, Delphi, Denso, Lucas, Magnet-Marelli, Siemens/VDO | M8x1.0 / M8x1.25 / M10x1.5 / M12x1.5 / M17x0.75 / M17x1.0 / M18x0.75 / M20x1.0 / M22x1.5 | M14x1.5 / M16x1.5 / M18x1.5 / M25x0.5 / M25x1.0 / M26x0.75 / M27x0.75 / M27x1.0 / M27x1.25 / M29x1.0 / M31x0.75 | Diesel          | M14x1.5         | pneumatic  | 6.5 bar                 |

Your dealer/stamp:

**GEDORE**  
 KLANN EXPERIENCE

**SOLUTIONS NEWS + PROMOTION**  
 valid from 01.09. – 31.12.2025  
 Only while stock lasts.

Delivery without decoration.  
 Subject to technical changes.  
 For all details, please ask your local dealer.

**GEDORE Automotive GmbH**  
 Breslauer Straße 41 | 78166 Donaueschingen | GERMANY  
 Tel. +49 771 83223-0 | info.gam@gedore.com

[gedore-automotive.com](http://gedore-automotive.com)